



# LUNCH COLLOQUIUM

September 24, 2018

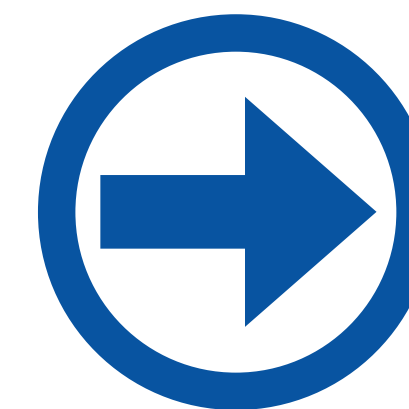


# ORDER OF ANNOUNCEMENTS

1. Jones Student Association (JSA)
2. Energy Association
3. Technology Association
4. Net Impact
5. Rice Business Women's Organization
6. Women in Leadership Conference
7. Career Development Office (CDO)
8. Student Programs Office (SPO)

# Jones Student Association

**Michelle Humphrey**



**on deck**  
**Energy Association**

# Jones Gives Back

What: Student-wide volunteer event + free lunch/drinks

Who: Everyone (and their significant others)

When: **This Saturday**, Sept 29<sup>th</sup> (Starts @ 8am)

Where: 4 Locations – see CampusGroups Event

*Career Resource & Recover, Junior Achievement, Hurricane Harvey Clean-up, Muscular Dystrophy Walk*

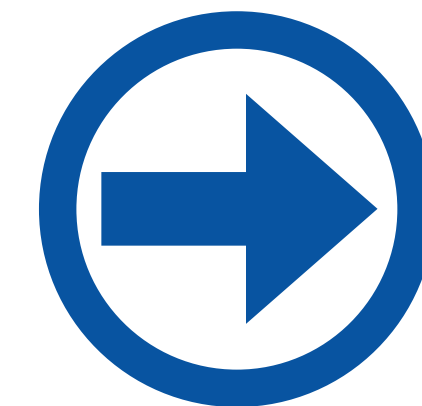
Contact: Michelle Humphrey – meh17@rice.edu

Action Item: SIGN UP!

[https://jones.campusgroups.com/jgb/rsvp\\_boot?id=406268](https://jones.campusgroups.com/jgb/rsvp_boot?id=406268)

# Energy Association

**Ludmila Paul**

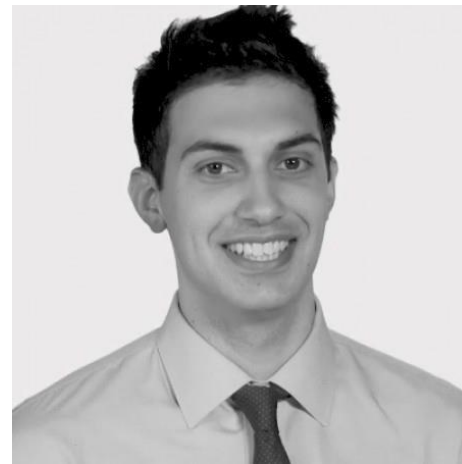


**on deck**  
**Technology**  
**Association**

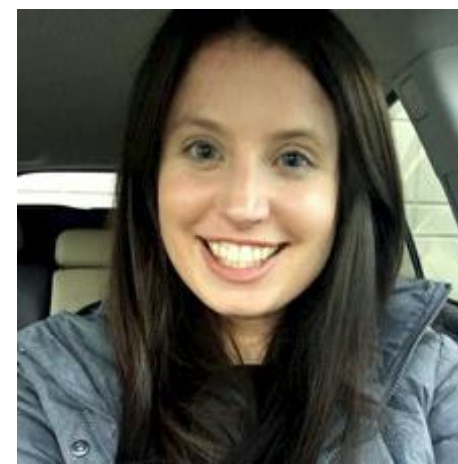
# Rice Energy Finance Summit

Thank you to everyone interested in joining the 2018 REFS Committee.

Congratulations and welcome to the selected First Year Officers!



Lucas Bifera



Allison Cedeno



Carrie Ding



Sandy Ma



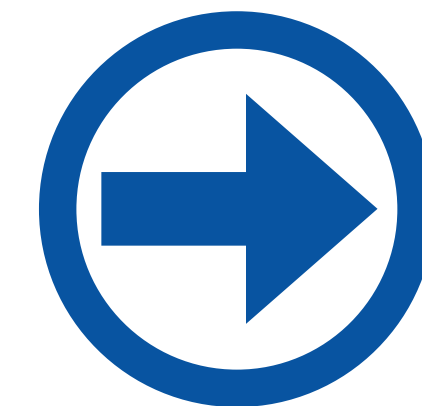
Beatriz Mireles



Utkarsh Shukla

# Technology Association

## Aric Stocks



**on deck**  
**Net Impact**

# Coding for MBAs (CDO Sponsored!)

What: Learn SQL and how to build a web app

Who: People interested in learning and in tech

When: Saturday, November 10, 8:30 AM – 5:30 PM

Where: Room 312

Action Item: **Registration opens at 5:00 PM TODAY!**

Capped at 25 participants.

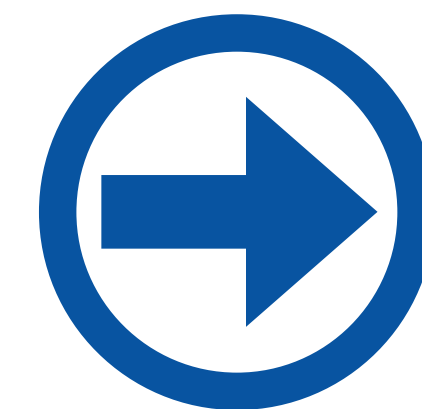
Tech Club Members prioritized. \$25.

<http://cglink.me/r404989>

Will repeat in the spring if there is significant interest on the waitlist!

# Net Impact

**Krystine Taylor**



**on deck**  
**Women's**  
**Organization**

# HAPPY HOUR: BEER THE CHANGE

## What:

Take a study break and enjoy beer from a brewery that has made sustainability a priority.

## Who:

Net Impact and Beer Club members: FREE!

Non-members: \$10

**When:** Thursday October 4, 2018

## Where:

8<sup>th</sup> Wonder Brewery

2202 Dallas Street Houston, TX 77003

Contact: [flavia.sacerdot@rice.edu](mailto:flavia.sacerdot@rice.edu) or

[colin.j.oneill@rice.edu](mailto:colin.j.oneill@rice.edu)

**RSVP on CampusGroups!**



**BEER WILL  
CHANGE  
THE WORLD!**

*I don't  
know how,  
but it will*



# BAYOU BOAT TOUR

## What:

Private boat tour around downtown Houston. Learn about conservation efforts and effects on real estate. Food will be provided. BYOB!

## Who:

Net Impact and Real Estate Club: \$8  
Non-members: \$12

**When:** November 10, 2018

## Where:

150 Sabine Street Houston, TX 77007

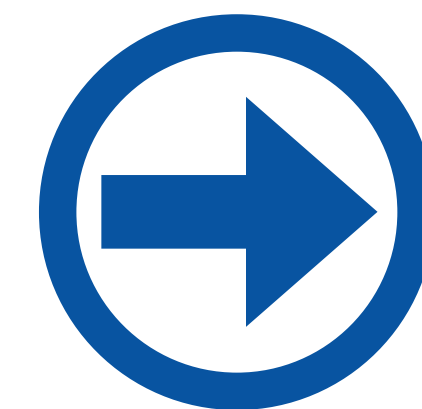
Contact: [jktaylor@rice.edu](mailto:jktaylor@rice.edu)

**RSVP on CampusGroups!**



# Women's Organization (RBWO)

**Allison Luthy-Kaplan**



**on deck**  
**WILC Conference**

# NAWMBA Houston Networking Lunch

What: Swinging through the Career Jungle Gym

When: Tuesday, September 25th 11:30-1:00pm

Where: Escalante's; 12821 Kimberley Lane #10

Sold Out

Contact: [mitch.robertson@rice.edu](mailto:mitch.robertson@rice.edu)

*"People who view their careers as jungle gyms, rather than ladders, make sure their vision is always peripheral so that they can see opportunities that come along -- and swing to them." - Pattie Sellars*

# Horses in Houston

What: Opportunities for Women in Equine Business Panel

When: Sunday, October 14 from 1:00 to 3:00

Where: Rice University, Duncan Hall foyer

Contact: [Allison.luthykaplan@rice.edu](mailto:Allison.luthykaplan@rice.edu)

Join Jones School alum and professional show jumping rider Sparky Frost to learn more about areas of opportunity in equine business and STEM education followed by a networking session.

# Consulting Career Trek

## Save the Date

RBWO members are invited to come on a career trek to visit consulting firms who have expressed a desire to bring in more female talent. We will be visiting the offices of the consulting firms to experience their working environments firsthand. The visit will include a tour of the offices, panel discussions, networking opportunities, and a luncheon. More details to come.

When: Friday, November 16

Contact: [Allison.luthykaplan@rice.edu](mailto:Allison.luthykaplan@rice.edu)

# Women in Leadership Conference (WILC)

**Mitchel Robertson**



# Women in Leadership Conference (WILC)

What: Call for LOIs to join the WILC committee

Who: Current RBWO member

Due: Friday, September 28th 11pm

Contact: [mitch.robertson@rice.edu](mailto:mitch.robertson@rice.edu)

Roles Include:

- event planning*
- marketing*
- external relations*
- operations*

19th annual WILC  
Friday, February 8, 2019

This leadership conference was created with the objective of:

- Providing a unique forum to exchange ideas on professional development and issues important to women in today's workforce
- Enabling corporations and industry leaders to contribute to the advancement of women leaders in the Houston community

# Career Development Office

**Tiffany Stott**



# Owl Careers 101

## ***What do these job categories mean?***

1. OCI (on-campus interviews)
2. Job Postings
3. 12TwentyGPS Job Network

## ***Job Posting Deadlines***

Submit your application by the posting deadline.  
Also, if employers feel they have enough qualified candidates, they may choose to remove their posting early.

# Upcoming Interview?

Brush up on your interview skills with this virtual mock interview software.

The CDO has created custom interview sets for Investment Banking, Management Consulting, Energy, Technology, Real Estate, Marketing and Healthcare.

In addition to Big Interview, consider making a mock interview appointment with an advisor. <http://ricebusiness.biginterview.com/>

# Share your wins!

- If you've received an offer for an internship or full-time role, please report it in OWL-Careers.
- This information is directly tied to our rankings (and the better our school ranks – the better for you and your MBA reputation!)
- Help us help you, and report any offers you receive in to [OWL-Careers](#).





**#IREP**  
**HARD THIS WEEK**

